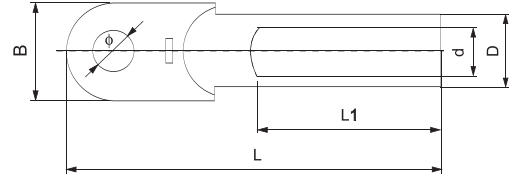


### Copper Cable Lugs

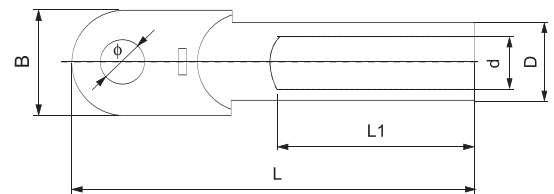
1. Material: E-copper
2. Surface: bright & tinned



Part No .	Cross section mm <sup>2</sup>	Dimensions(mm)					
		D	d	φ	L1	B	L
DT-10	10	9	5.5	8.5	31	16	67
DT-16	16	10	6.5	8.5	32	16	67
DT-25	25	11	7	8.5	34	18	70
DT-35	35	12	8.5	10.5	40	20.5	79
DT-50	50	14	9.5	10.5	42	23	87
DT-70	70	16	11.5	12.5	47	26	95
DT-95	95	18	13.5	12.5	50	28	105
DT-120	120	20	15	14.5	53	30	112
DT-150	150	22	16.5	14.5	55	34	118
DT-185	185	25	18.5	16.5	58	37	125
DT-240	240	27	21	16.5	60	40	136
DT-300	300	30	23	21	65	50	160
DT-400	400	34	26	21	70	50	165
DT-500	500	38	29	21	75	60	190

### Aluminum cable lugs

1. Material: Al99.5
2. Surface: bright



Part No.	Dimensions(mm)						
	mm <sup>2</sup>	D	d	Φ	L1	B	L
DL-16	16	10	5.5	8.5	32	16	70
DL-25	25	12	7	8.5	34	18	75
DL-35	35	14	8.5	10.5	40	20.5	85
DL-50	50	16	9.5	10.5	42	23	90
DL-70	70	18	11.5	12.5	47	26	102
DL-95	95	21	13.5	12.5	50	28	112
DL-120	120	23	15	14.5	53	30	120
DL-150	150	25	16.5	14.5	55	34	126
DL-185	185	27	18.5	16.5	58	37	133
DL-240	240	30	21	16.5	60	40	140
DL-300	300	34	23	21	65	50	165
DL-400	400	34	26.5	21	70	50	170
DL-500	500	42	29.5	21	75	60	190