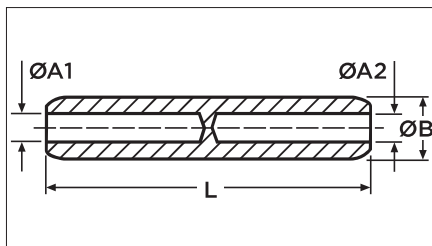


Aluminium sleeves, XG8BM type



Application

- These aluminium sleeves are used for non tension connections in MV and LV aluminium underground cables applications.

Description

- These sleeves are made of pure aluminium.
- Accept cables according to NFC 32013 and IEC 228.
- To be crimped by deep stepped indentation.
- Delivered with compound.

Features and benefits

Range from: 16 to 1200 mm ² for equal cross-section, 25 – 16 mm ² to 240 – 185 mm ² for different cross-sections.	One technology for all sizes of cables.
Crimped deep step indentation.	High quality connections independent installer's skills. Single connector model for a given conductor cross-sectional area (independent of the core compression ratio).
Blind hole.	Can be used as transition connection between plastic insulated cable and paper insulated cable.
Spherical design.	Avoid dielectric stress when re-insul- ated.
Compliance with specification C33090-1, electrical test performances in accordance, with NFC 63-061 Class A and IEC 1238-1 Class A.	

Designation	PN	RPN	Cross Section (mm ²)	Dimensions (mm)				Weight (g)	Standard Packaging
				ØB	ØA1	ØA2	L		
XG8BM 16	0-1273035-1	415450-000	16	16	5,5	5,5	90,5	60	3
XG8BM 25	0-1273012-1	735382-000	25	16	6,5	6,5	90,5	60	3
XG8BM 35	0-1229975-1	903304-000	35	16	8,0	8,0	90,5	60	3
XG8BM 50	0-1229974-1	280454-000	50	20	9,0	9,0	106,5	95	3
XG8BM 70	0-1229973-1	867124-000	70	20	11,0	11,0	106,5	85	3
XG8BM 95	0-1229972-1	267134-000	95	20	12,5	12,5	106,5	80	3
XG8BM 120	0-1229971-1	509312-000	120	25	13,7	13,7	133,0	140	3
XG8BM 150	0-1229735-1	129656-000	150	25	15,5	15,5	133,0	130	3
XG8BM 185	0-1229734-1	395276-000	185	32	17,0	17,0	143,5	240	3
XG8BM 240	0-1229733-1	659048-000	240	32	19,5	19,5	143,5	220	3
XG8BM 300	0-0709302-1	924692-000	300	40	23,3	23,3	208,0	550	3
XG8BM 400	0-0709302-2	834266-000	400	40	26,0	26,0	208,0	550	3
XG8BM 500	0-0709340-1	828122-000	500	47	29,1	29,1	218,5	-	3
XG8BM 630	0-0709342-2	668334-000	630	47	32,5	32,5	218,5	850	3
XG8BM 800	0-0708980-1	-	800	60	37,5	37,5	274,0	-	3
XG8BM 1000	0-0708981-1	-	1000	60	42,0	42,0	276,0	-	3
XG8BM 1200	0-0708957-1	-	1200	65	45,5	45,5	333,0	-	3